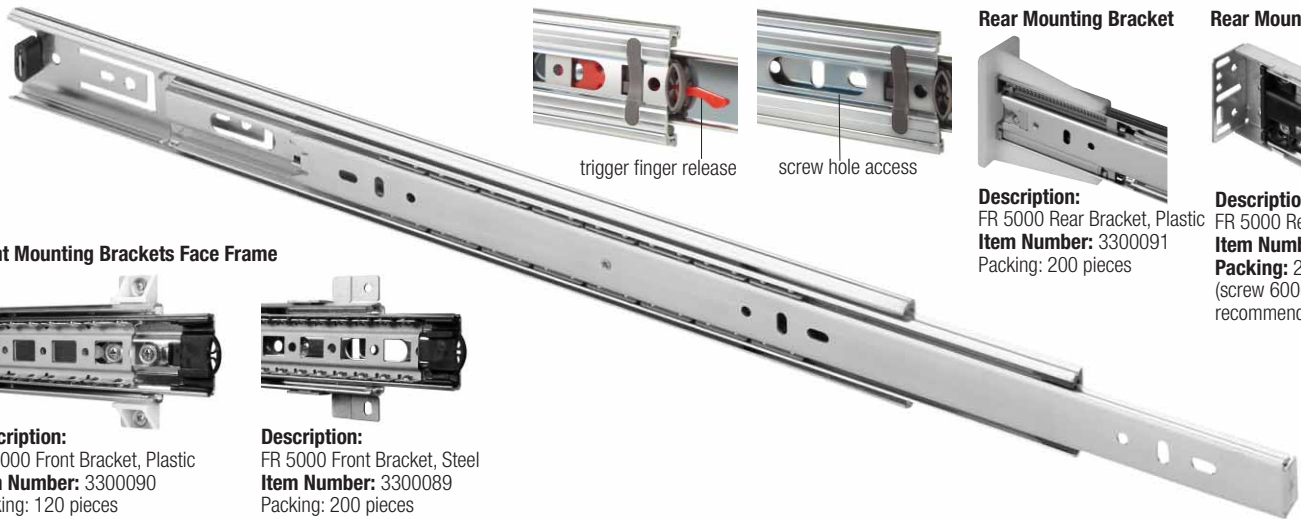


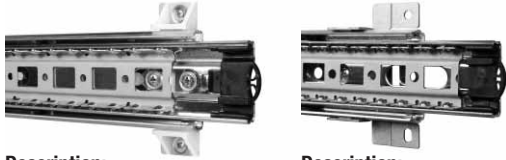
FR 5000

SLIDE TYPE:	Full-Extension Ball Bearing Drawer Slide - Standard Version
MOUNTING:	Side Mount

WIDTH:	12.3 mm (0.48 in.)
LOAD CAPACITY:	dynamic up to 45 kg (100 lbs.)



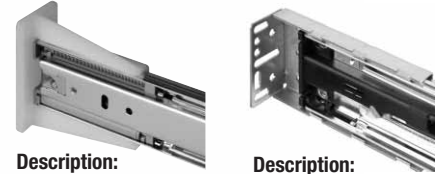
Front Mounting Brackets Face Frame



Description:
FR 5000 Front Bracket, Plastic
Item Number: 3300090
Packing: 120 pieces

Description:
FR 5000 Front Bracket, Steel
Item Number: 3300089
Packing: 200 pieces

Rear Mounting Bracket



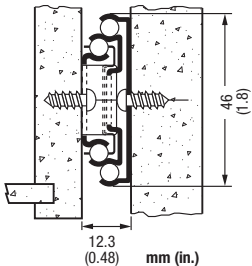
Description:
FR 5000 Rear Bracket, Plastic
Item Number: 3300091
Packing: 200 pieces

Description:
FR 5000 Rear Bracket, Steel
Item Number: 33000921
Packing: 200 pieces
(screw 6000091 recommended)

MATERIALS:	cold rolled steel
-------------------	-------------------

FEATURES:	steel ball bearings
------------------	---------------------

SPECIFICATIONS:	<ul style="list-style-type: none"> ▶ precision ball bearing drawer slide for medium-duty applications in office and residential furniture ▶ drawer profile features an easy to operate disconnect finger release trigger ▶ system 32 compatible hole locations ▶ drawer slide is non-handed, and has a hold-close detent
------------------------	--



12.3 mm (0.48 in.) is the actual size of the slide. Allow a min. of 12.8 mm (0.50 in.) for clearance and a maximum of 13.3 mm (0.52 in.).



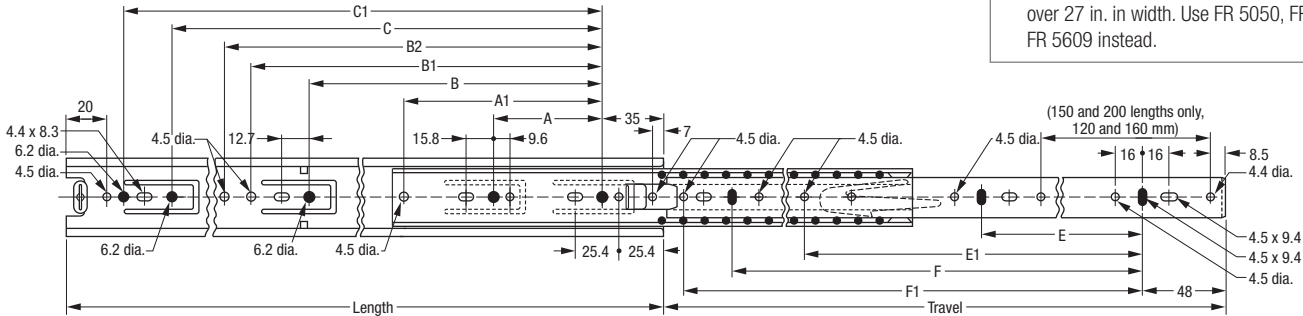
FR 5000 Bottom Mounting Bracket
Steel, height 11mm
Item Number: 3300101
Steel, height 21mm
Item Number: 3300103
Packing: 200 pieces



FR 5000 Front Mounting Bracket for Face Frame with offset
Steel, offset 20mm
Item Number: 3300105
Packing: 200 pieces

NOTE:	▶ The compatible regular extension sister model FR 5005
--------------	---

CAUTION:	<ul style="list-style-type: none"> ▶ For a rigid connection of the front and rear face frame mounting brackets we recommend the use of truss head screw 6000091. See screws page. ▶ We do not recommend this slide to be used on drawers over 27 in. in width. Use FR 5050, FR 5210, FR 5755, FR 5609 instead.
-----------------	--



Length mm in	Travel mm in	Cabinet Profile:						Drawer Profile:				Order No. black	Order No. zinc	
		A	A1	B	B1	B2	C	C1	E	E1	F			F1
150	5.91 150 5.91	64	2.52										*	400014
200	7.87 200	7.87	64	2.52		96	3.78						*	400015
250	9.84 250 9.84	64	2.52			160	6.30					160	6.30	400019 400020
300	11.81 308 11.81	64	2.52	128	5.04	192	7.56	224	8.82			192	7.56 224 8.82	400018 400022
350	13.78 350 13.78	64	2.52	128	5.04	224	8.82	282	11.10			96	3.78 256 10.08	400040 400023
400	15.75 400 15.75	64	2.52	128	5.04	224	8.82	282	11.10			128	5.04 288 11.34 320 12.60	600041 400024
450	17.72 450 17.72	64	2.52	128	5.04	224	8.82	282	11.10			160	6.30 271 10.67 352 13.86	400042 400021
500	19.69 500 19.69	64	2.52	128	5.04	224	8.82	282	11.10			192	7.56 297 11.69 416 16.38	400043 400025
550	21.65 550 21.65	64	2.52	128	5.04	224	8.82	282	11.10	352	13.86	448	17.64 480 18.90	400044 400026
600	23.62 600 23.62	64	2.52			224	8.82	282	11.10	352	13.86	480	18.90	600045 400027
650	25.59 650 25.59	64	2.52			224	8.82	282	11.10	352	13.86	544	21.42	* 400033
700	27.56 700 27.56	64	2.52			224	8.82	282	11.10	352	13.86	576	22.68	* 400034
750	29.53 750 29.53	64	2.52			224	8.82	282	11.10	352	13.86	640	25.20	* *

Packing Unit: lengths 150mm & 200mm 20 pair per box, lengths 250mm to 750mm 10 pair per box

* on request